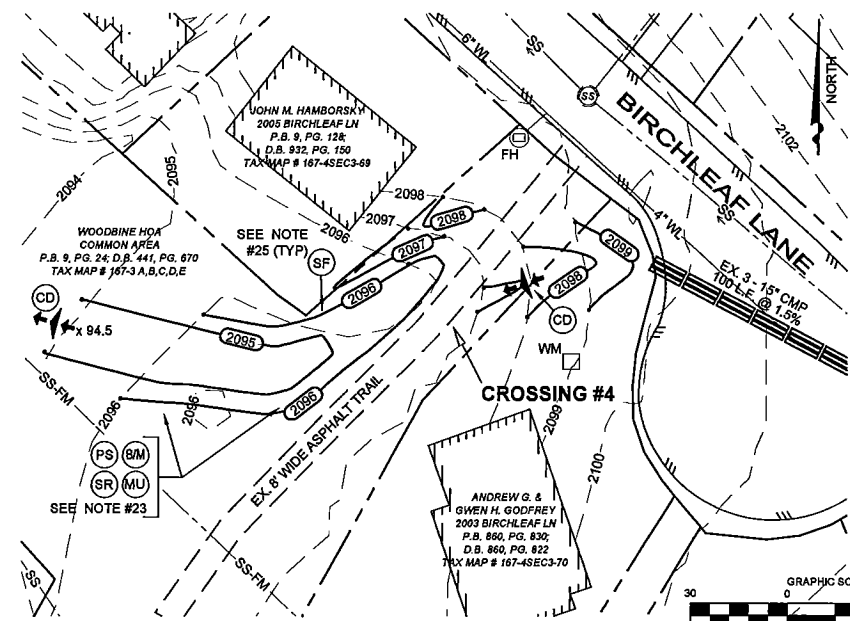
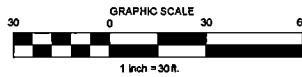
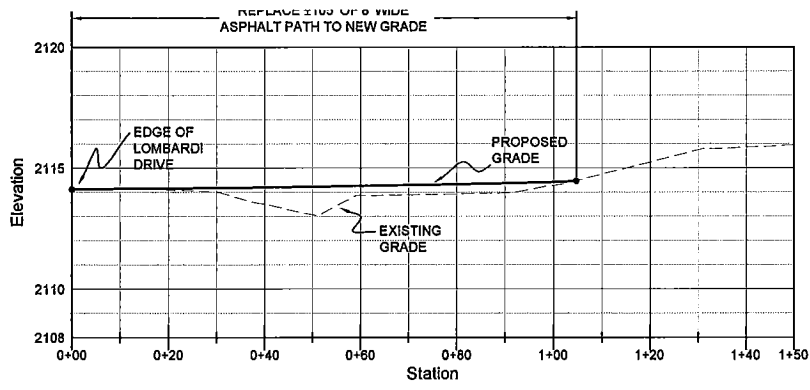


DRAINAGE & GRADING PLAN - REALIGNED PATH & CROSSING #3
SCALE: 1" = 30'

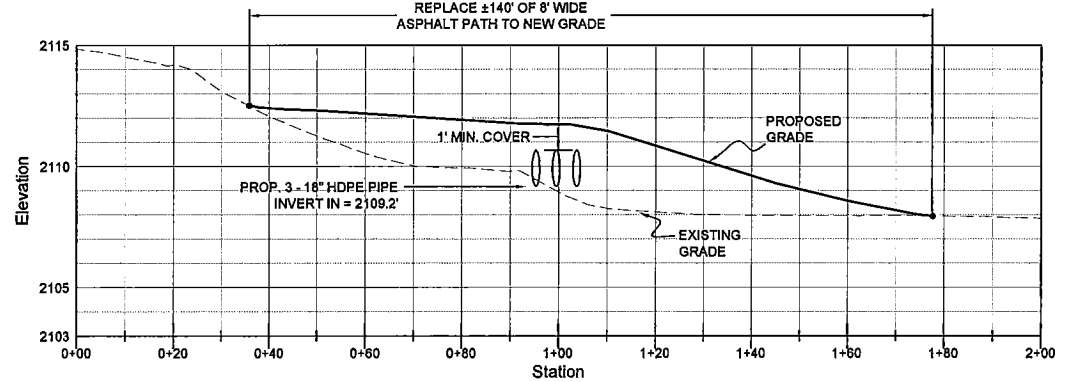


DRAINAGE & GRADING PLAN - CROSSING #4
SCALE: 1" = 30'



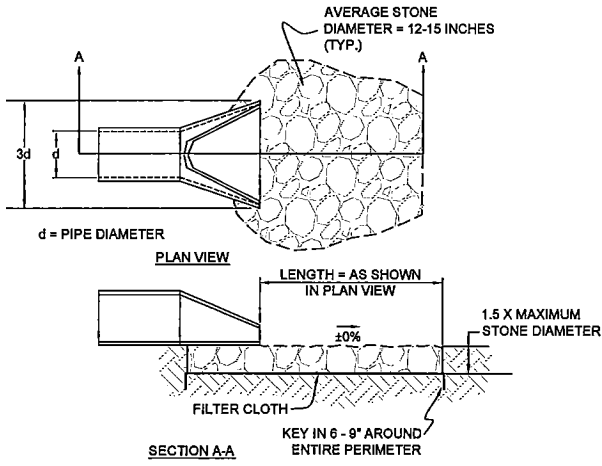
PROFILE VIEW: RE-ALIGNED PATH

SCALE
HORIZONTAL: 1" = 20'
VERTICAL: 1" = 4'



PROFILE VIEW: CENTERLINE PATH - CROSSING #3

SCALE
HORIZONTAL: 1" = 20'
VERTICAL: 1" = 4'



OUTLET PROTECTION DETAIL
NOT TO SCALE

APPROVED: _____
TOWN ENGINEER _____
TOWN PLANNER _____

TOWN OF
Blacksburg
a special place

Phone: (540) 981-1126
Fax: (540) 951-0672

300 South Main Street
Blacksburg, Virginia 24060-9003

**WOODBINE BLUE-WAY
PATH IMPROVEMENTS
GRADING & DRAINAGE**

TOWN OF BLACKSBURG, MONTGOMERY COUNTY, VIRGINIA
MT. TABOR MAGISTERIAL DISTRICT

REVISIONS:

NOT FINAL

DESIGNED BY: LFH
DRAWN BY: LFH
CHECKED BY: APS
SCALE: AS SHOWN
DATE: SEPT. 2009

SHEET NUMBER:
2 OF 2
JOB NUMBER:

* SEE SHEET 1 OF 2 FOR NOTES REFERENCED ON THIS SHEET.